

BUILDING
COMMON GROUND



Product & Service Overview

MAX FRANK Group

Edition
International

www.maxfrank.com





BUILDING COMMON GROUND

Individual project solutions and products of the MAX FRANK Group are in demand internationally and can be found in the most diverse types of structure, such as high-rise buildings, bridges, tunnels or infrastructures. Since its foundation MAX FRANK has developed into an integrated building technology supplier. We support our customers through every building phase with a technically sophisticated and intensive intermeshing of industrial production, high-quality products and multifaceted services. Added value is generated for our partners through know-how that has grown over the course of half a century, the large number of proven products for concrete and reinforced concrete construction and the technological bandwidth of our business units - spacers, formwork technology, reinforcement technology, sealing technology and building acoustics. It creates components with new functions and greater economy of the work processes on site.

Through its pronounced sense of value and its trustworthy integrity, MAX FRANK knows how to bridge chasms and to win over the different parties for a common agenda. We are assisted in this by our ability to listen attentively and to ask the right questions. Questions that penetrate to the core of the task and help to gain new insights and stake off more and more common terrain.

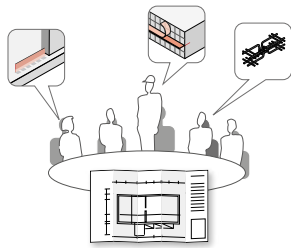
We at MAX FRANK call that:

BUILDING COMMON GROUND

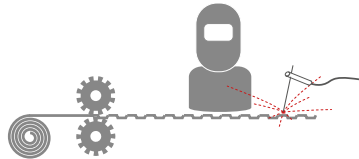
www.maxfrank.com

INDIVIDUAL VARIETY

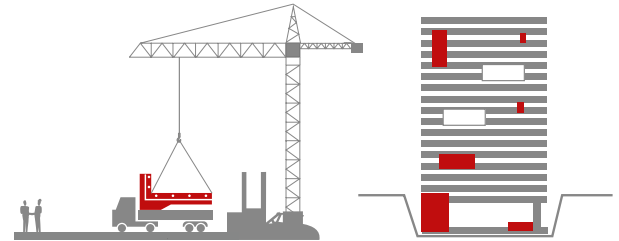
Products from MAX FRANK are technically sophisticated, requiring intensive explanation and advice – but above all they are versatile in use. Our service is versatile and precisely for that reason very personal.



PLANNING



PRODUCTION



BUILDING SITE



OUR STRENGTHS

A wide range of products, high-quality product combinations, project solutions, intermeshing of planning, production and sales



CUSTOMER BENEFITS

Saving of costs and time, solution from a single reliable source



THE COMMON APPROACH

Sustainable and safe reinforced concrete structures

VISIT OUR NEW WEBSITE

www.maxfrank.com

By using our new responsive webdesign, you will be led through the new MAX FRANK website and will conveniently be receiving all requested contents, despite which Smartphone you choose. Our website offers both information regarding our products and a wide range of exceptional services. Therefore you will find interesting features that support you through every building phase.



MAX FRANK BUILDINGS

This welcomed tool has been integrated into the website and is now even better connected to the detailed product information. The virtual landscape has been expanded for several new building types and now offers a perfect product range to include hydropower plants, industrial warehouses and railway stations.



PRODUCT FINDER

Filter easily by the requested scope of applications and product properties and you will be led directly through to the appropriate products allowing any challenges you have, to be solved.

CONTENTS



Spacers

page 6



Formwork technologies

page 16



Reinforcement technologies

page 34



Sealing technologies

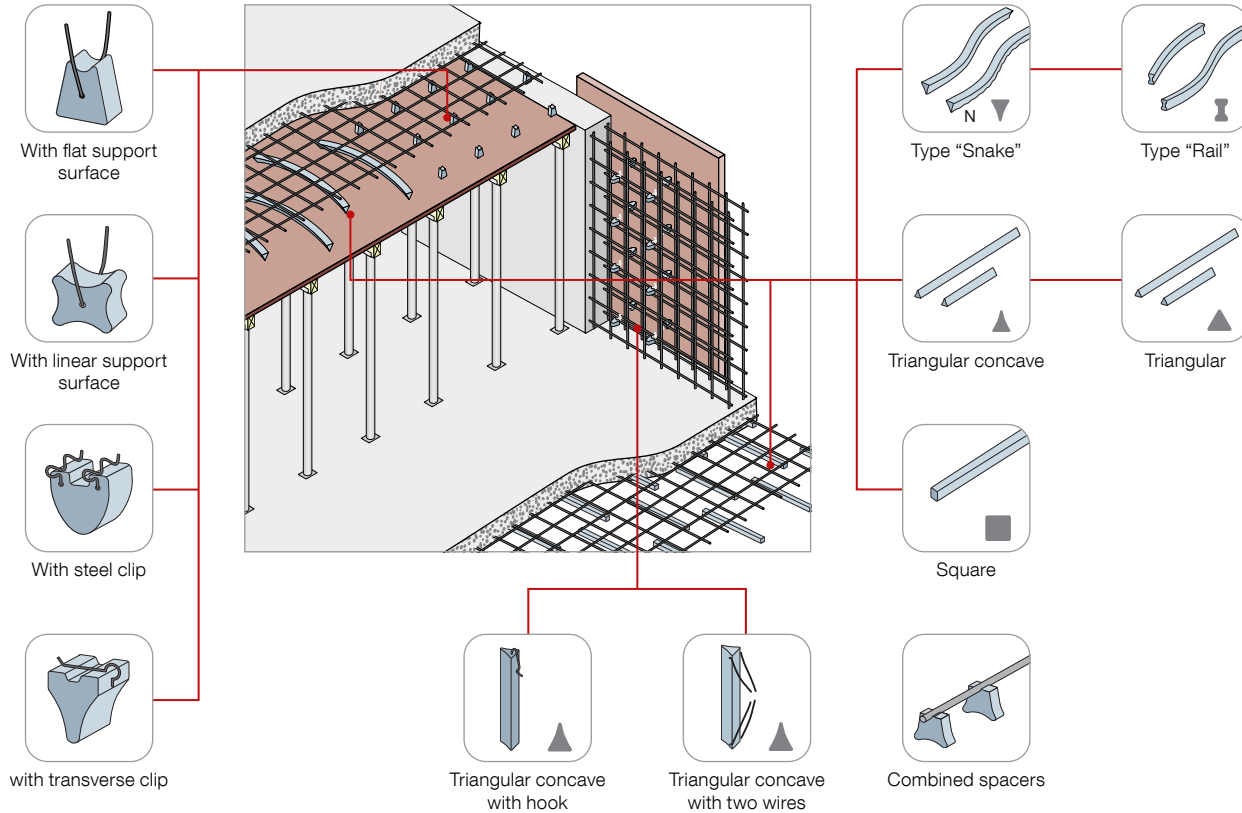
page 50

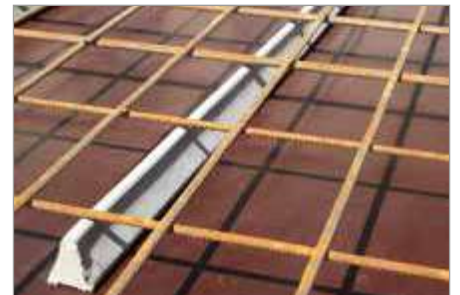
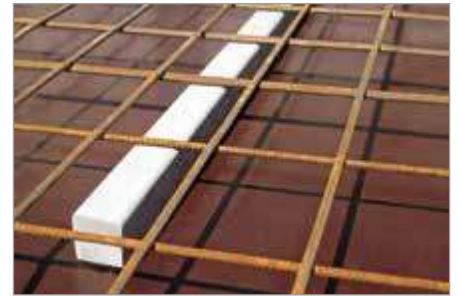
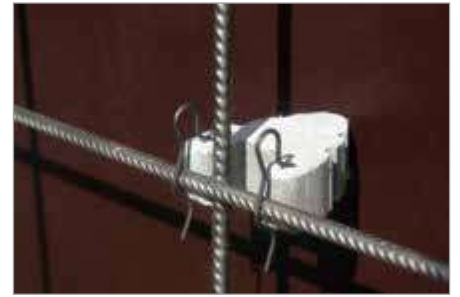
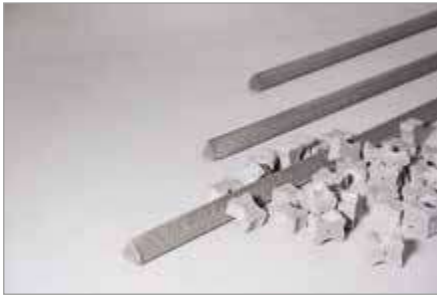


Building acoustics

page 58

Fibre concrete spacers

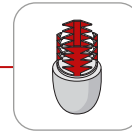
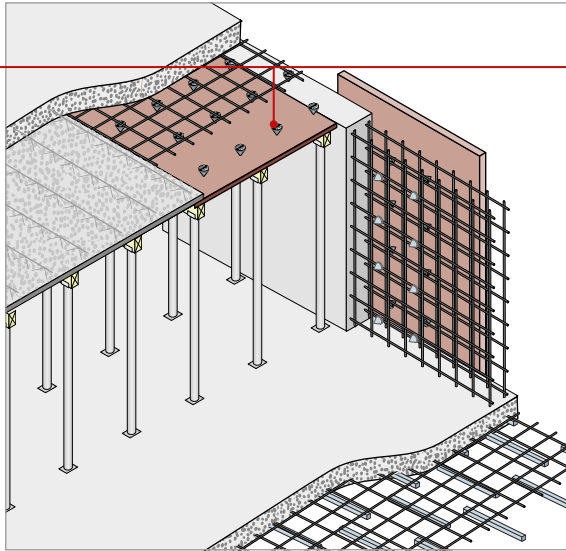




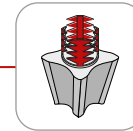
Cast concrete spacers



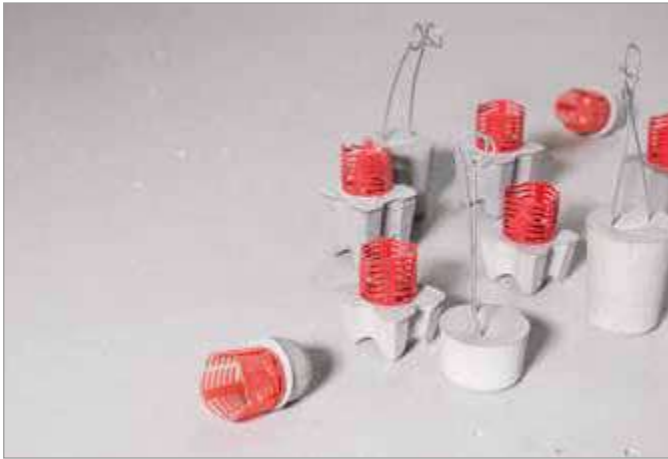
With wire



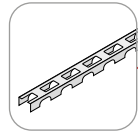
With shuttlecock clip



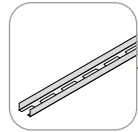
With shuttlecock clip



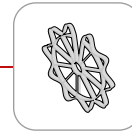
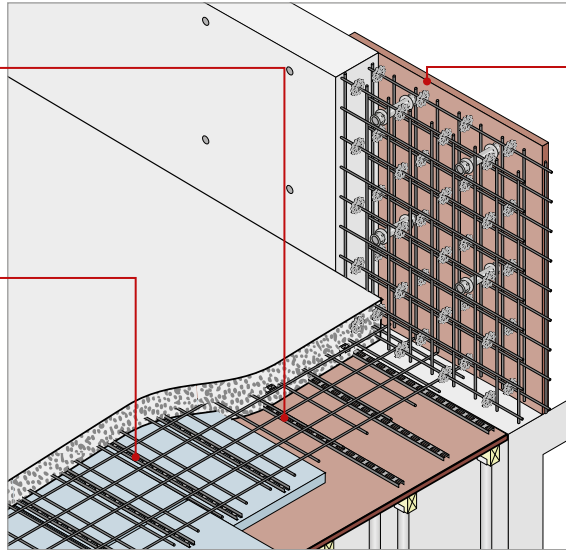
Plastic spacers



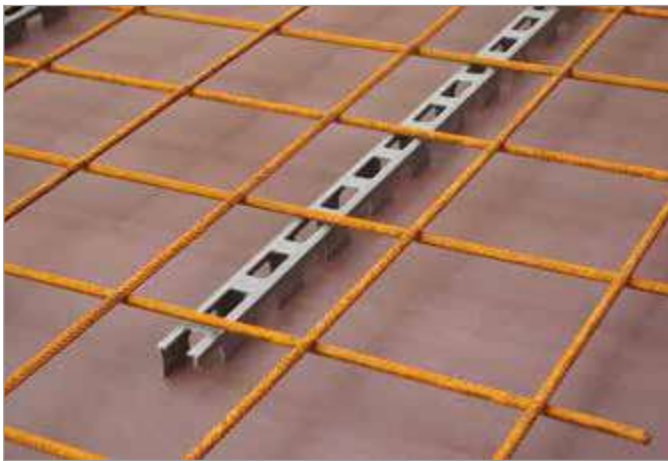
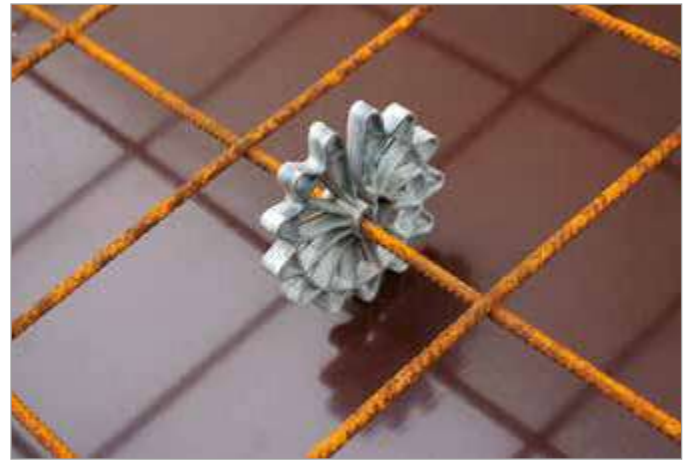
Bar spacer U-Pro



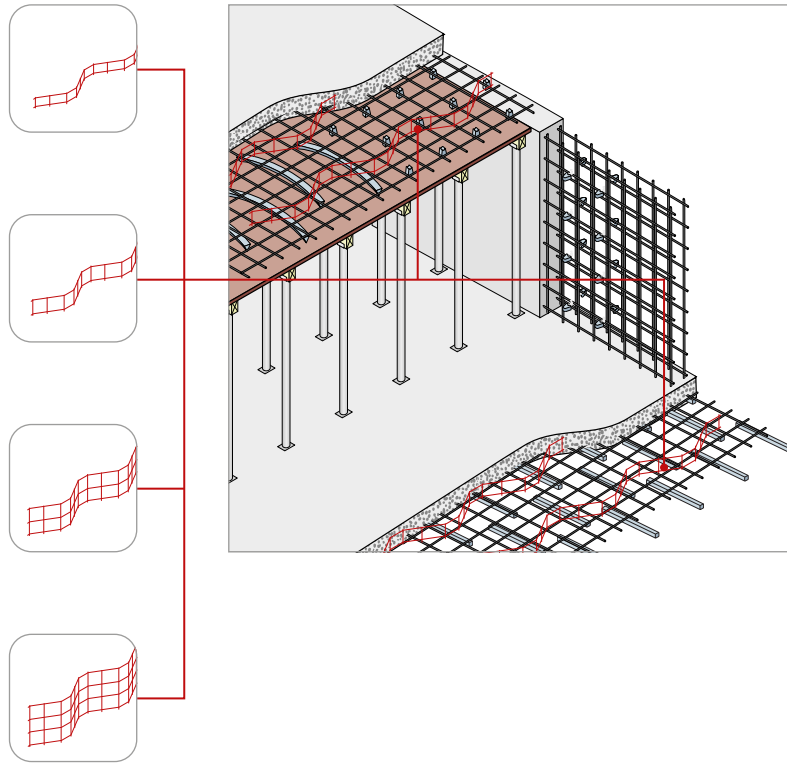
Bar spacer U-Pro
"without" for insu-
lation

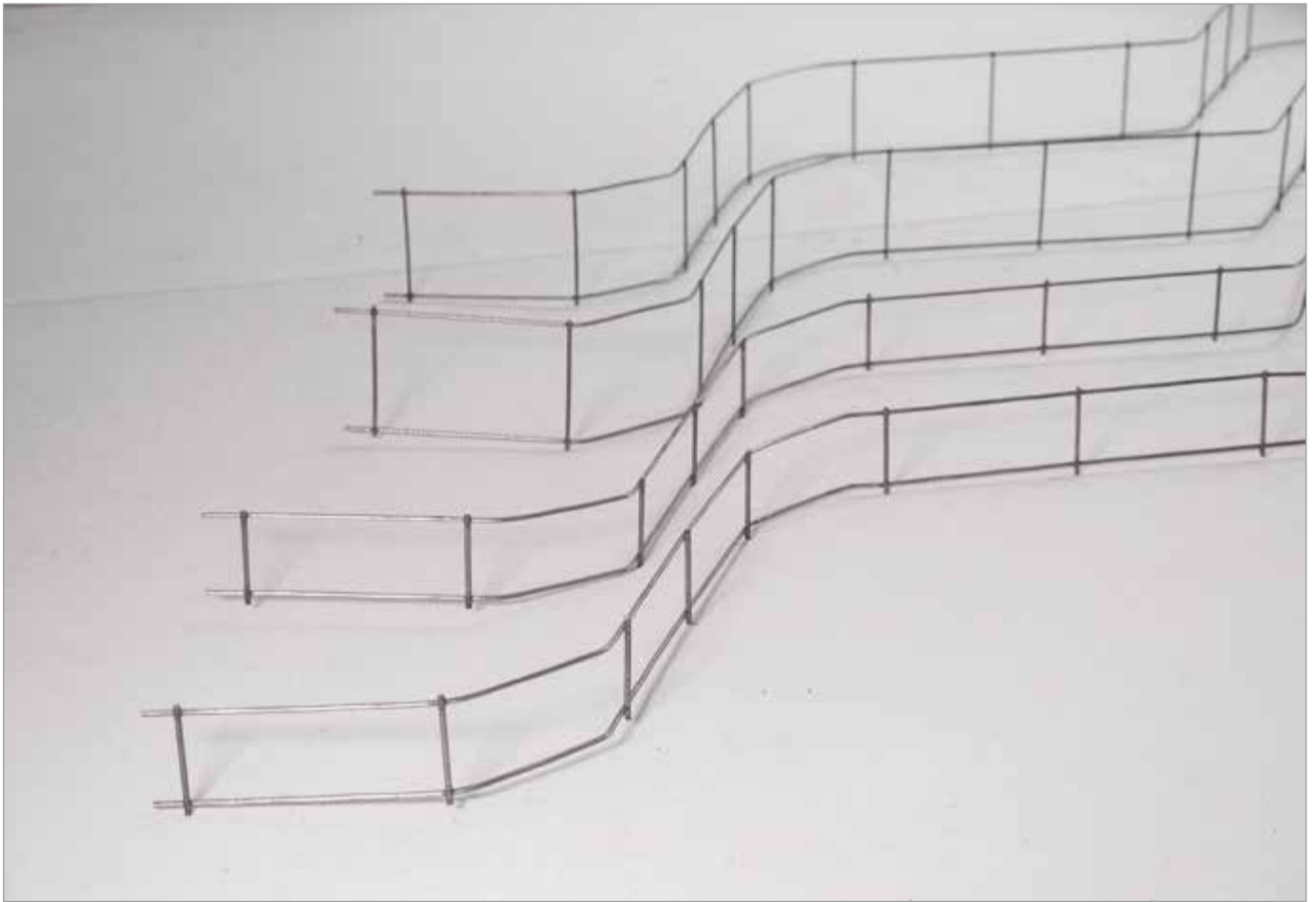


Plastic ring spacers

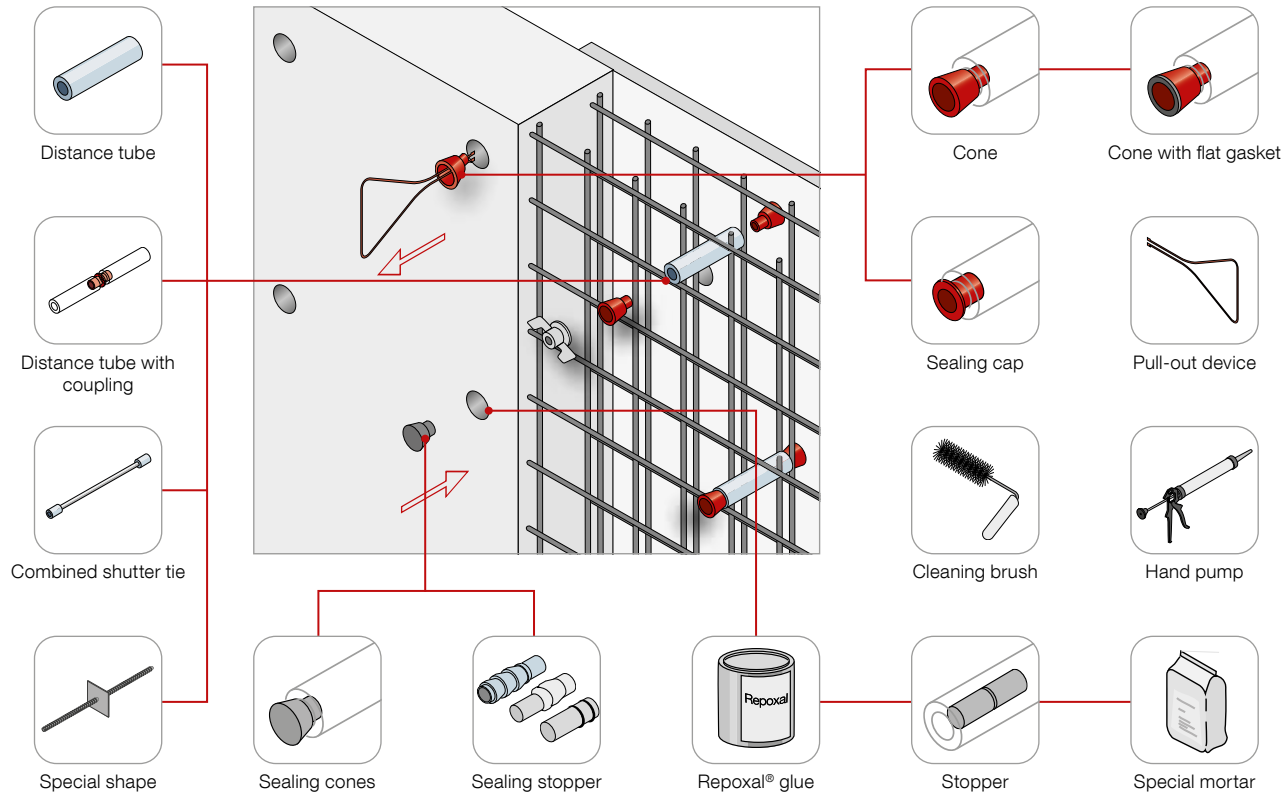


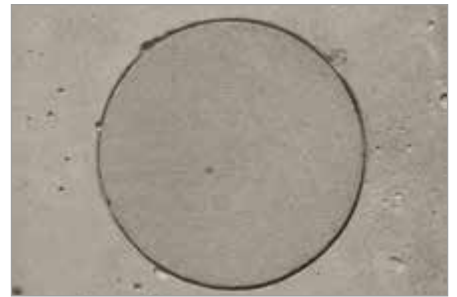
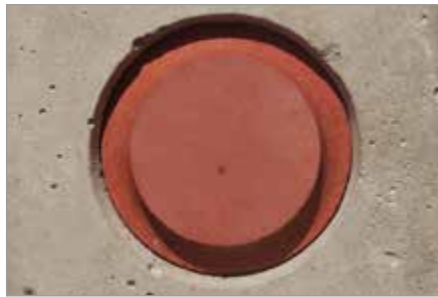
Steel spacers





Fibre concrete distance tubes

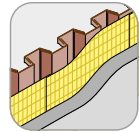




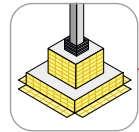
Pecafil® permanent formwork



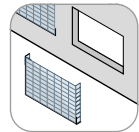
Separation layer
bored pile wall



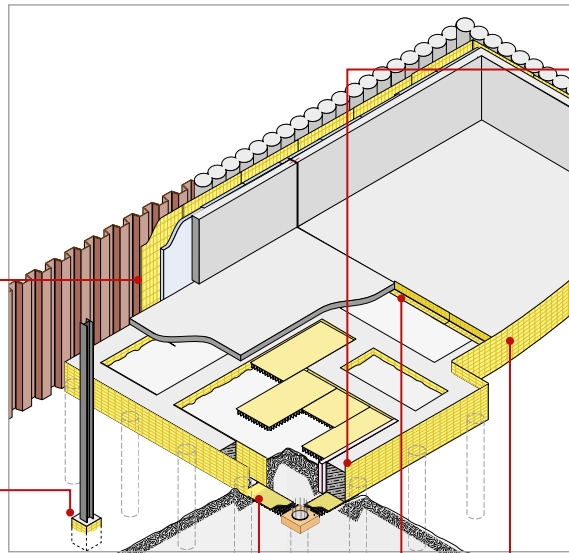
Separation layer
sheet pile wall



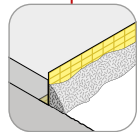
Box-out shutter



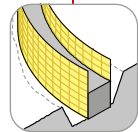
Pecafil® weather
protection



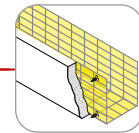
Pecavoid® ground
heave solution



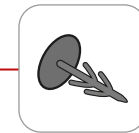
Edge formwork



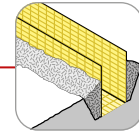
Circular formwork



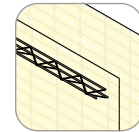
With thermal insu-
lation



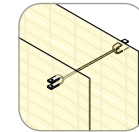
Plastic nail for ther-
mal insulation



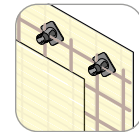
Beam foundation



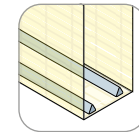
Lattice girder



Distance spacer



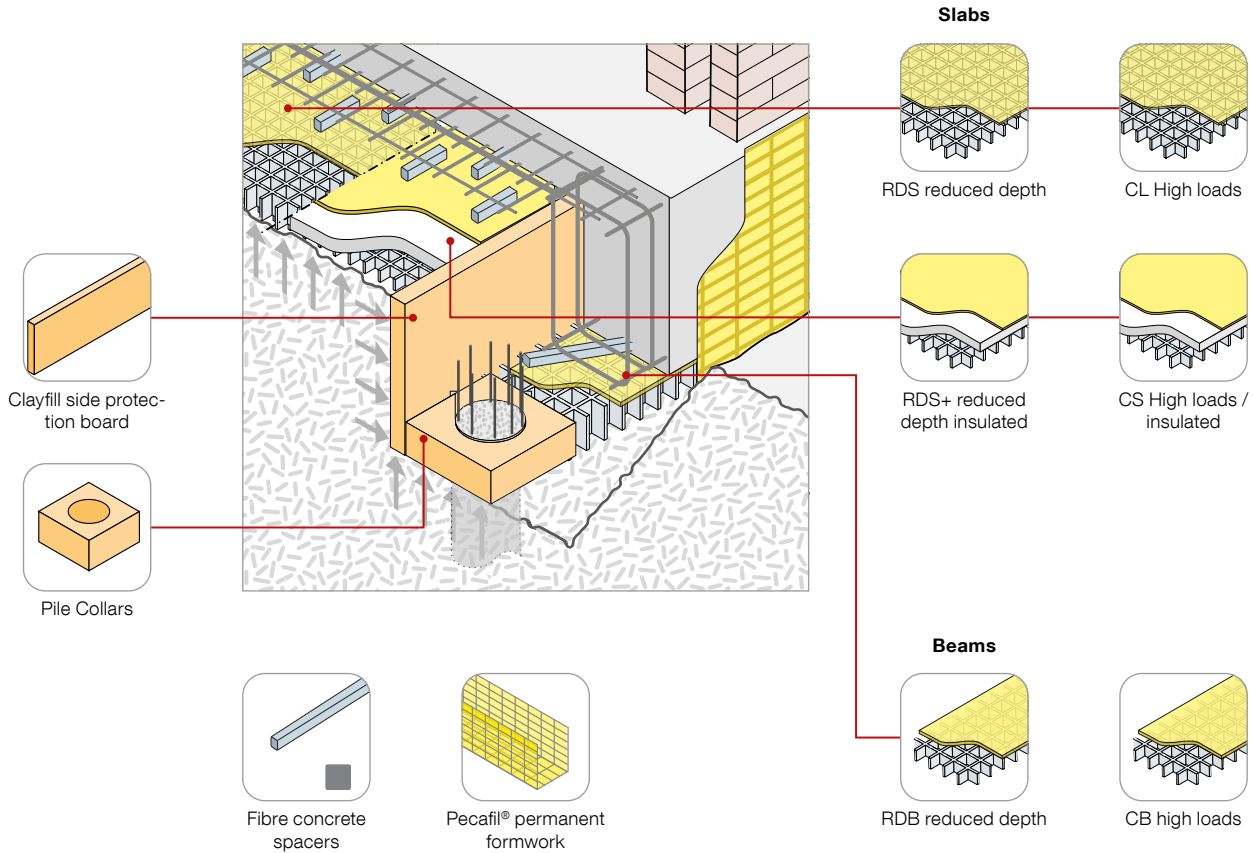
Spacer

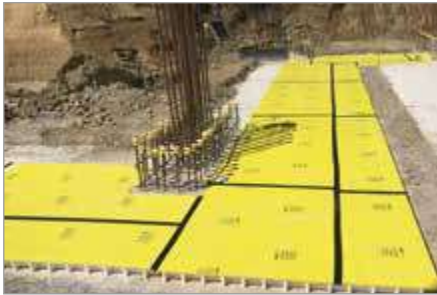
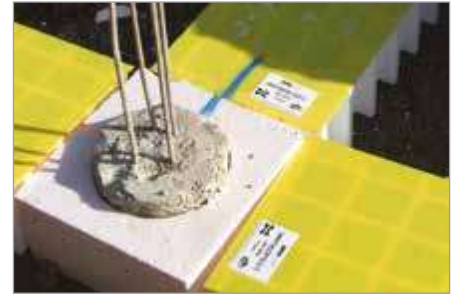


Fibre-reinforced
concrete spacers

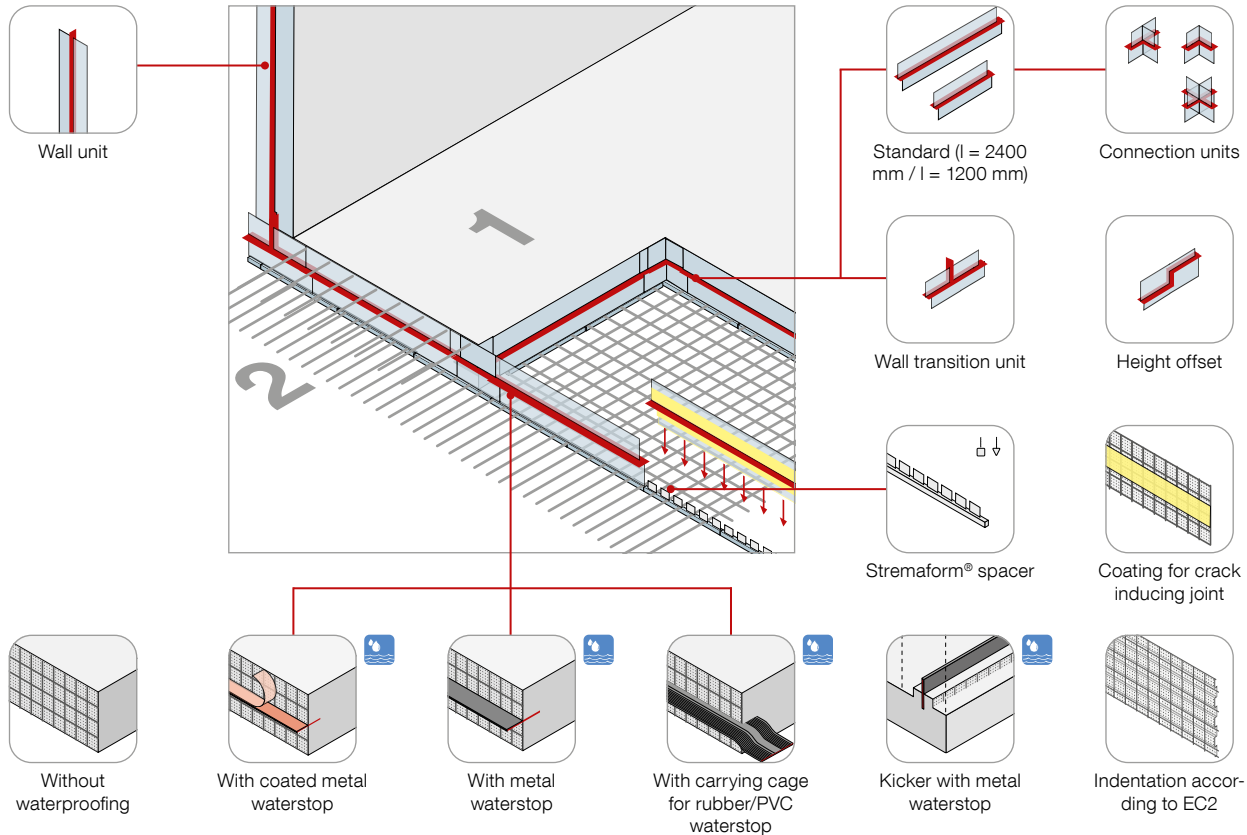


Pecavoid® ground heave solution



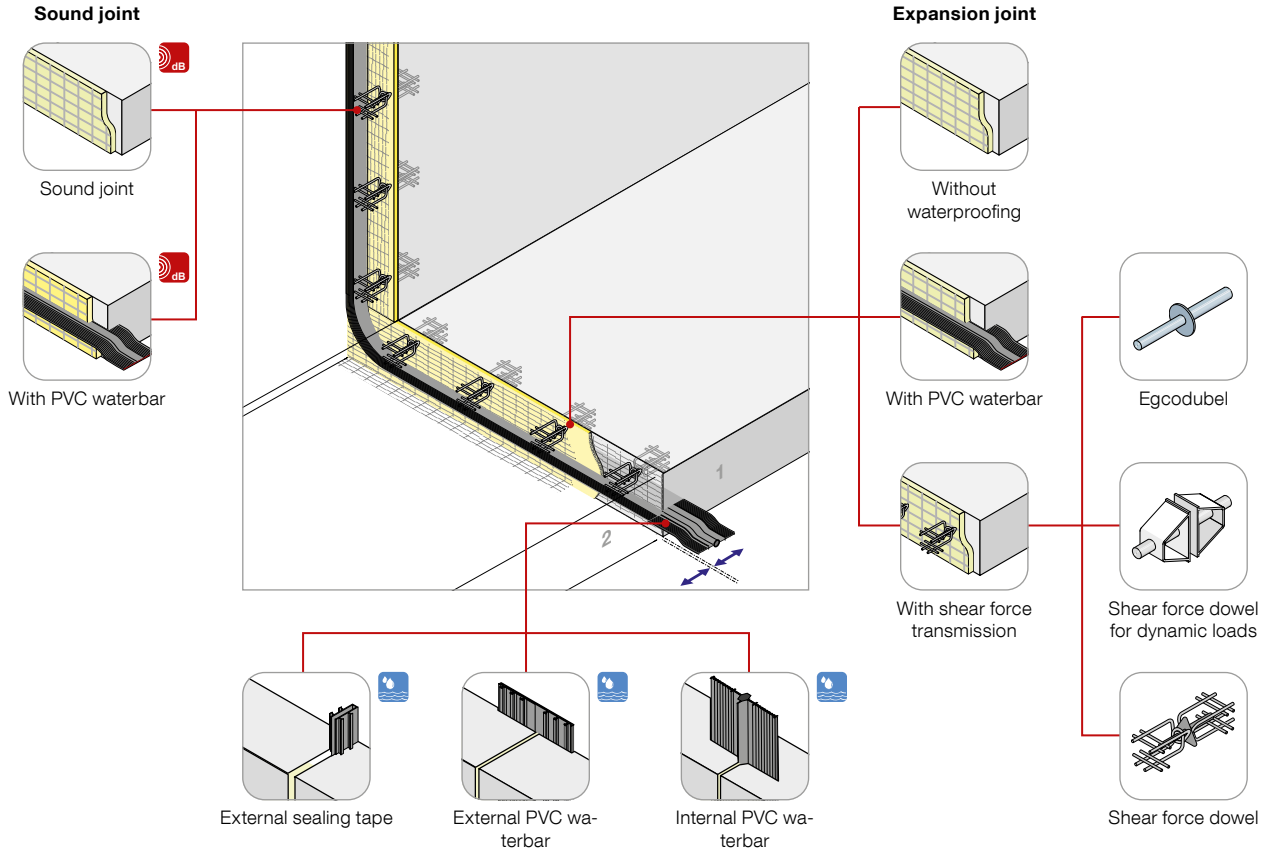


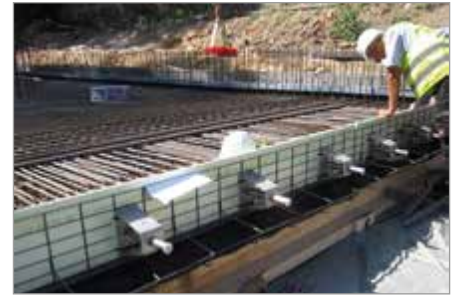
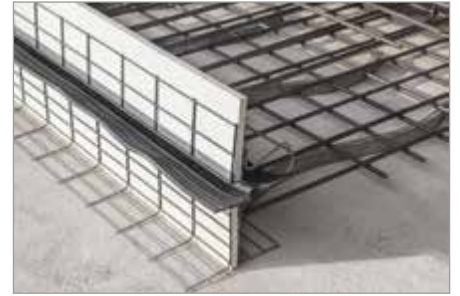
Stremaform® stay-in-place formwork for working joints



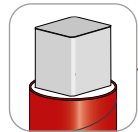


Stremaform® stay-in-place formwork for expansion joints

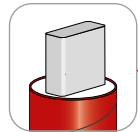




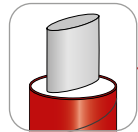
Tubbox[®] column former



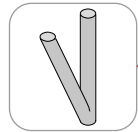
Square column



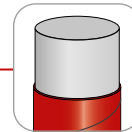
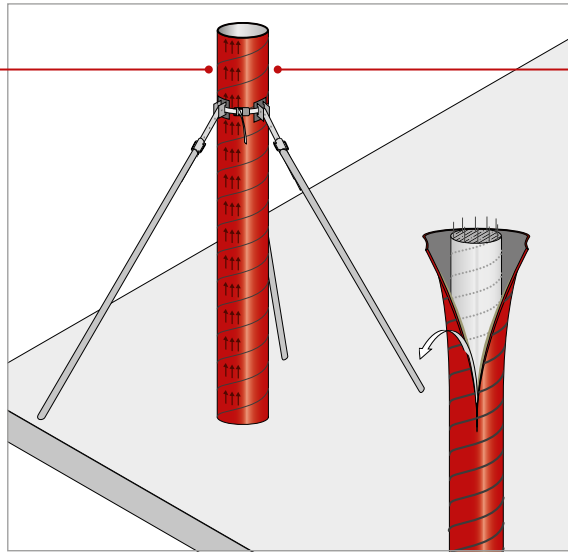
Rectangular column



Special shape



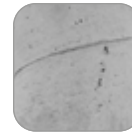
V-columns



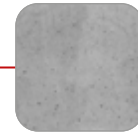
Round column



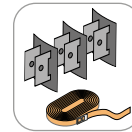
Surface; blowhole-free



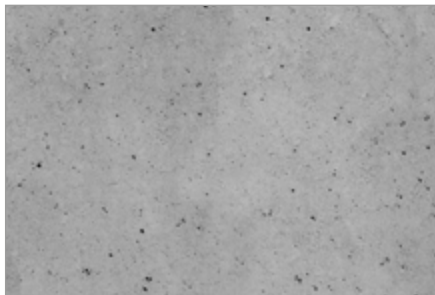
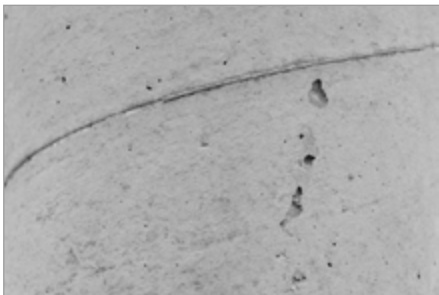
Surface; spiral



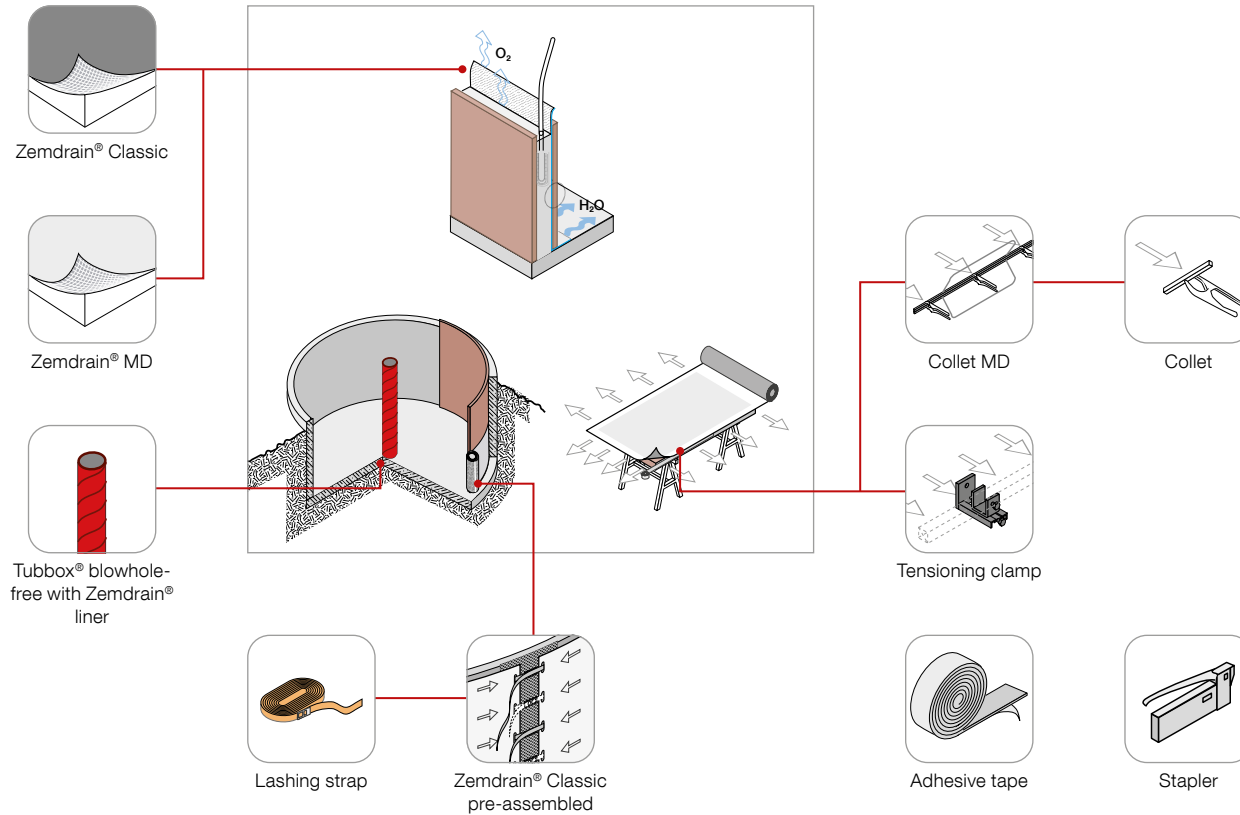
Surface; smooth



Components



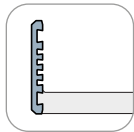
Zemdrain® CPF liner



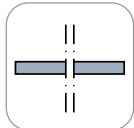


Balcony and ceiling edge formwork

Upstand standard (AKF)



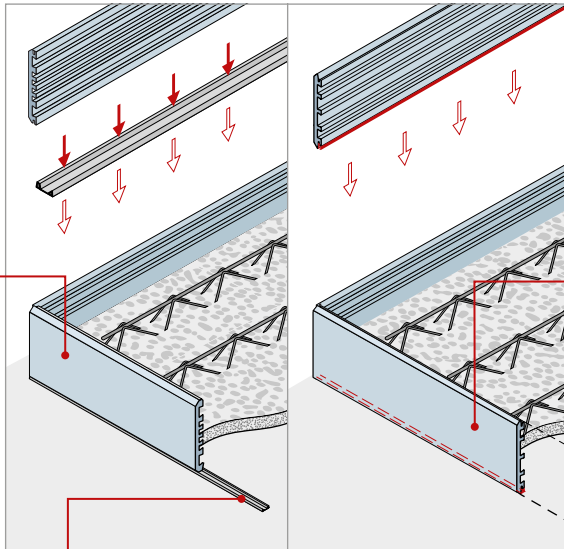
Standard unit



90° edges on both sides

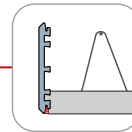


45° edge on one side

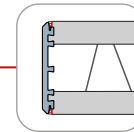


Drip profile made of plastic

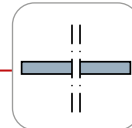
Upstand with sealing strip (AKZ)



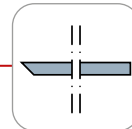
Type "Slab" with one-sided sealing strip



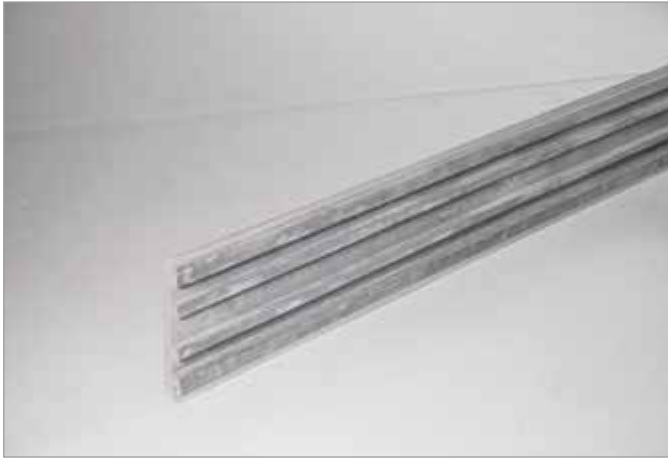
Type "Wall" with double-sided sealing strip



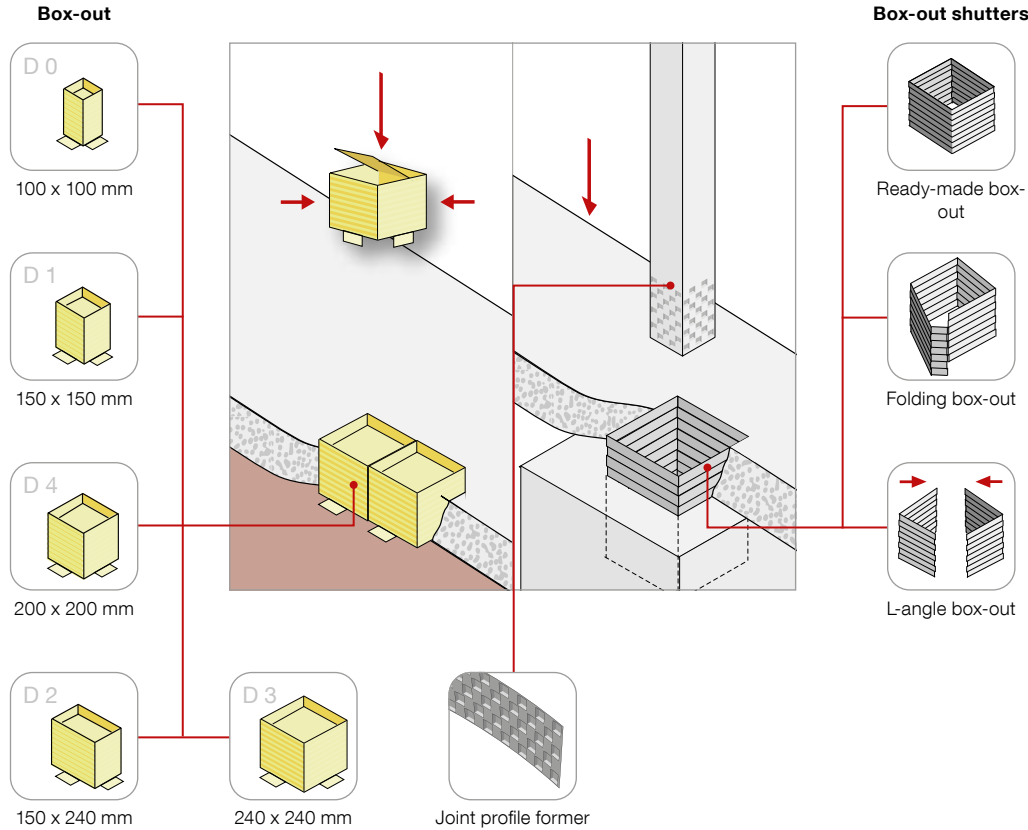
90° edges on both sides



45° edge on one side



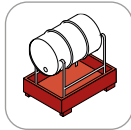
Box-out shutters and recess formers





Trennfit release agent

Components



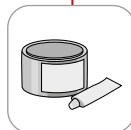
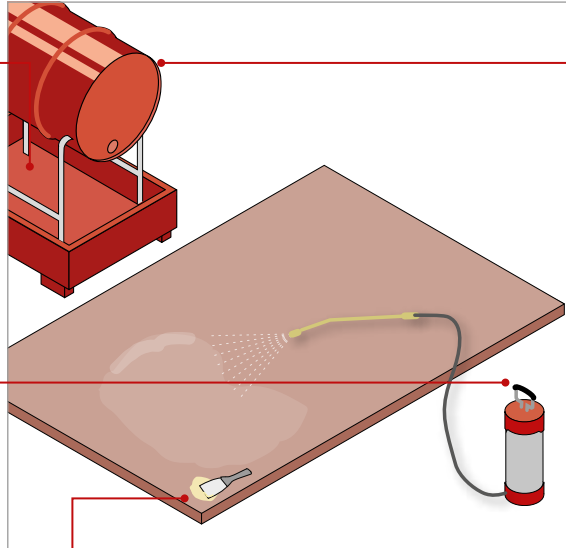
Collecting trough with drum holder



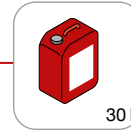
Special dispenser



Spare parts spraying device

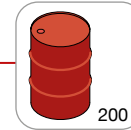


Special filler

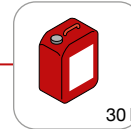


30 l

Trennfit Pure

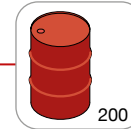


200 l

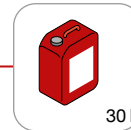


30 l

Trennfit Super

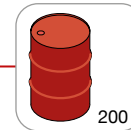


200 l



30 l

Trennfit

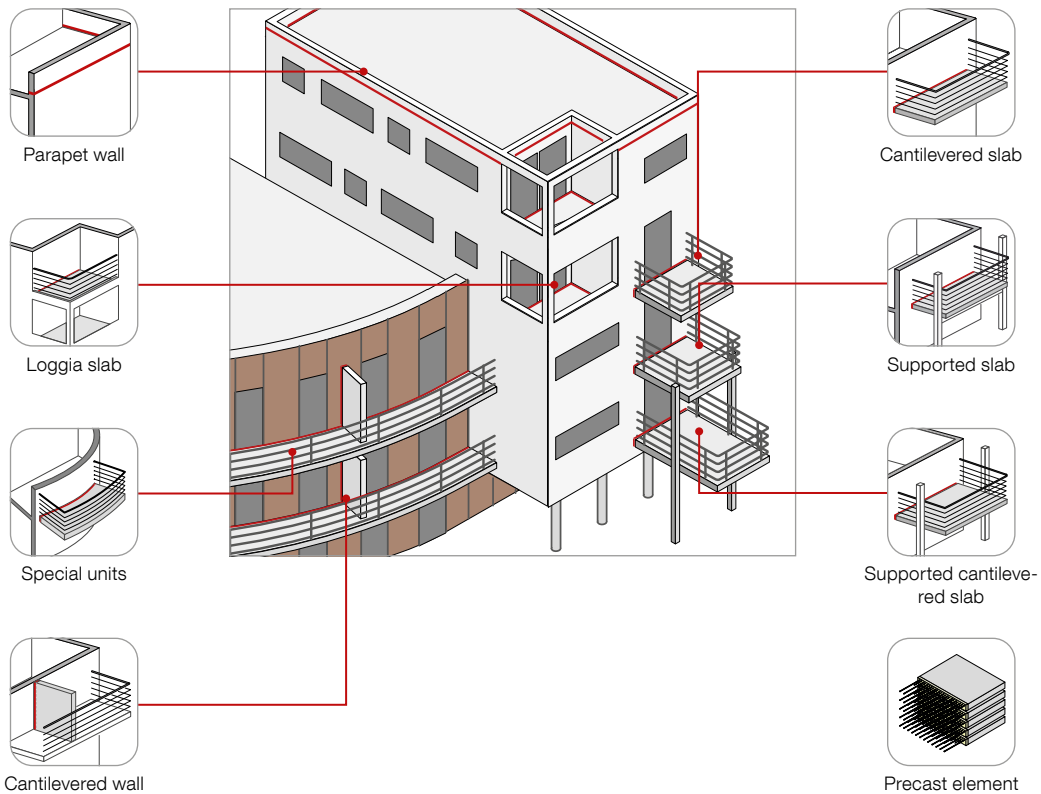


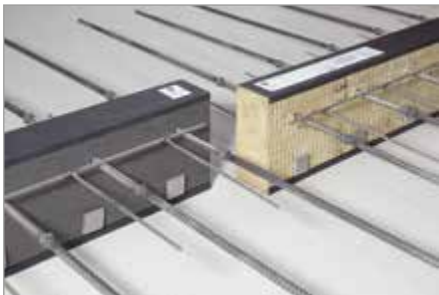
200 l



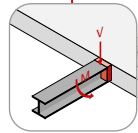
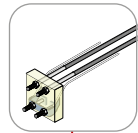


Egobox® thermal break balcony connector

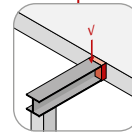
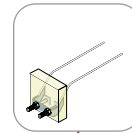
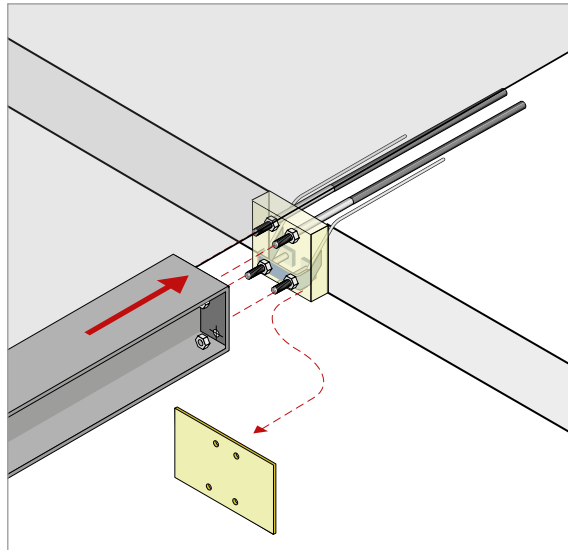




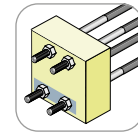
Egobox® FB steel-to-concrete thermal break



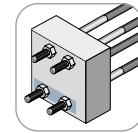
Egobox® FB-CB
with compression
bearing



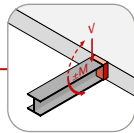
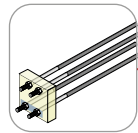
Egobox® FBV
with compression
bearing



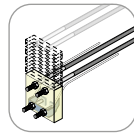
Insulation material
Rockwool



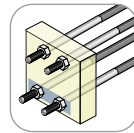
Insulation material
Polystyrene



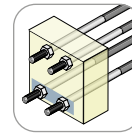
Egobox® FB±S with
compression bar



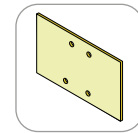
Unit height
180 - 280 mm



Joint thickness M,
d = 80 mm



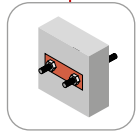
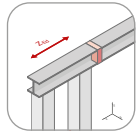
Joint thickness XL,
d = 120 mm



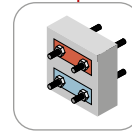
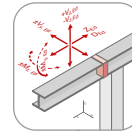
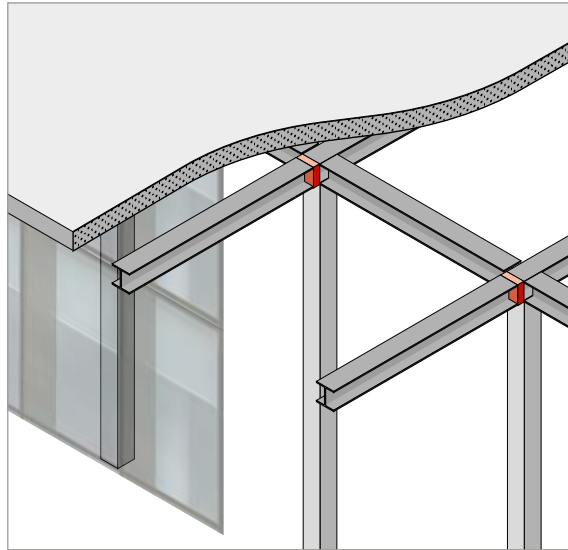
Mounting template



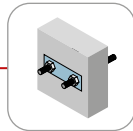
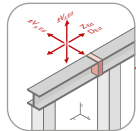
Egobox® FST steel thermal break connector



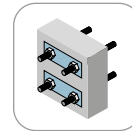
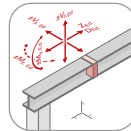
For tensile force stresses



For torques, normal and shear force stresses



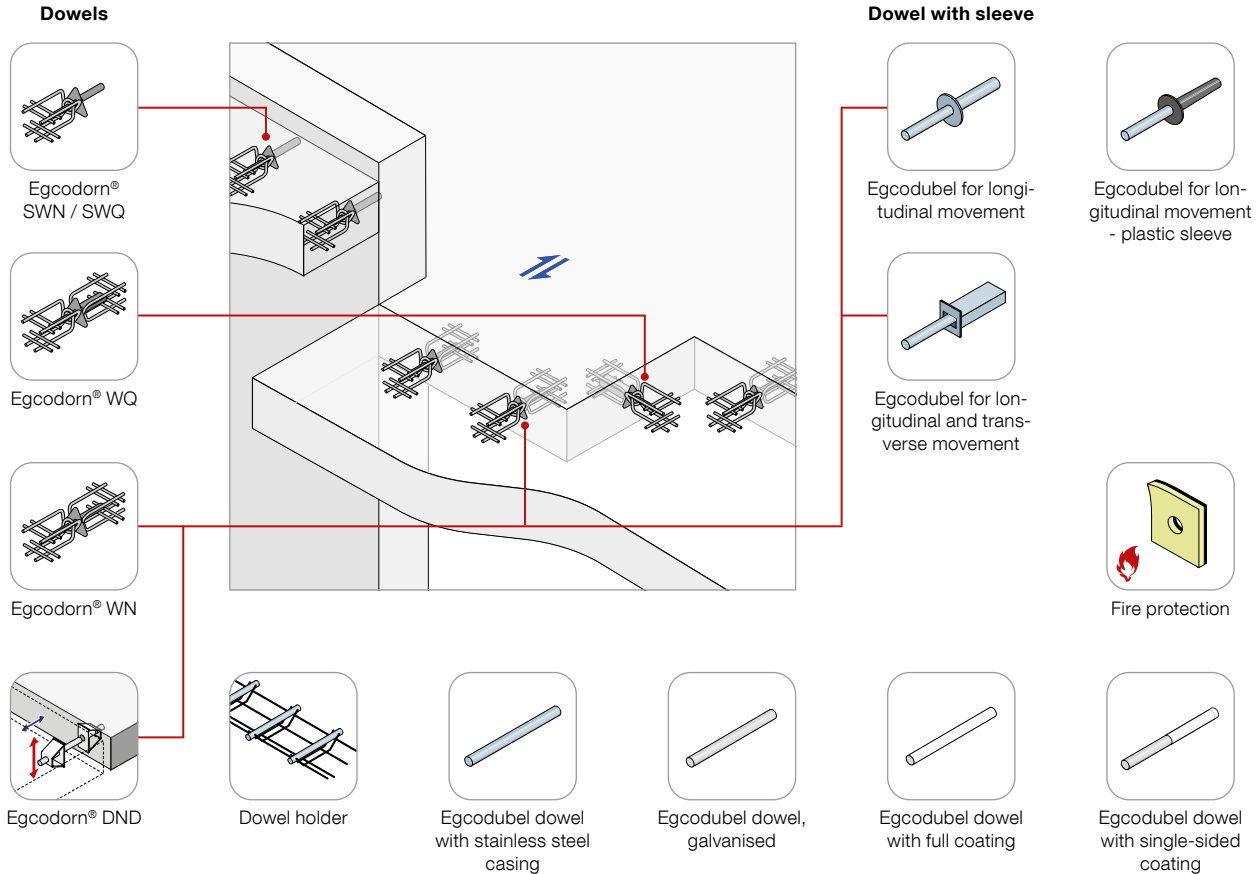
For normal and shear force stresses

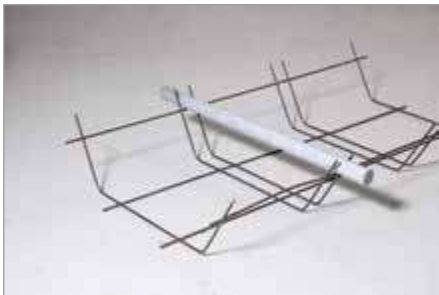
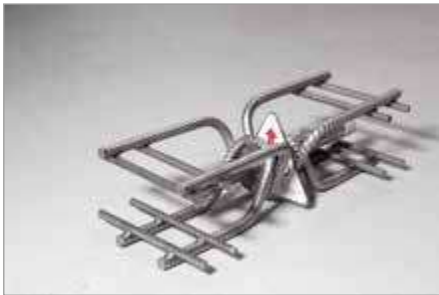


Changing normal, moment and shear force loads

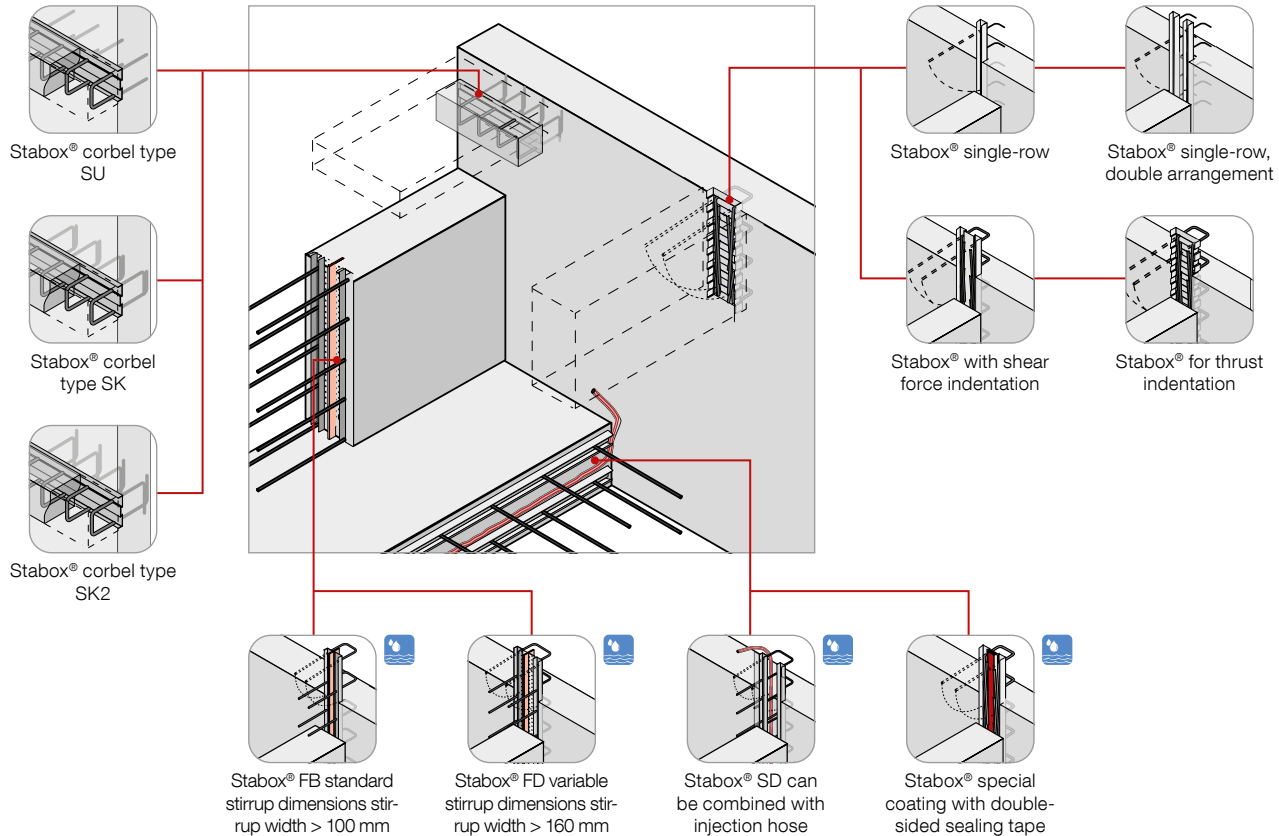


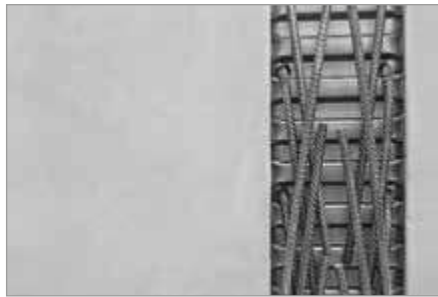
Egcodorn® shear force dowel



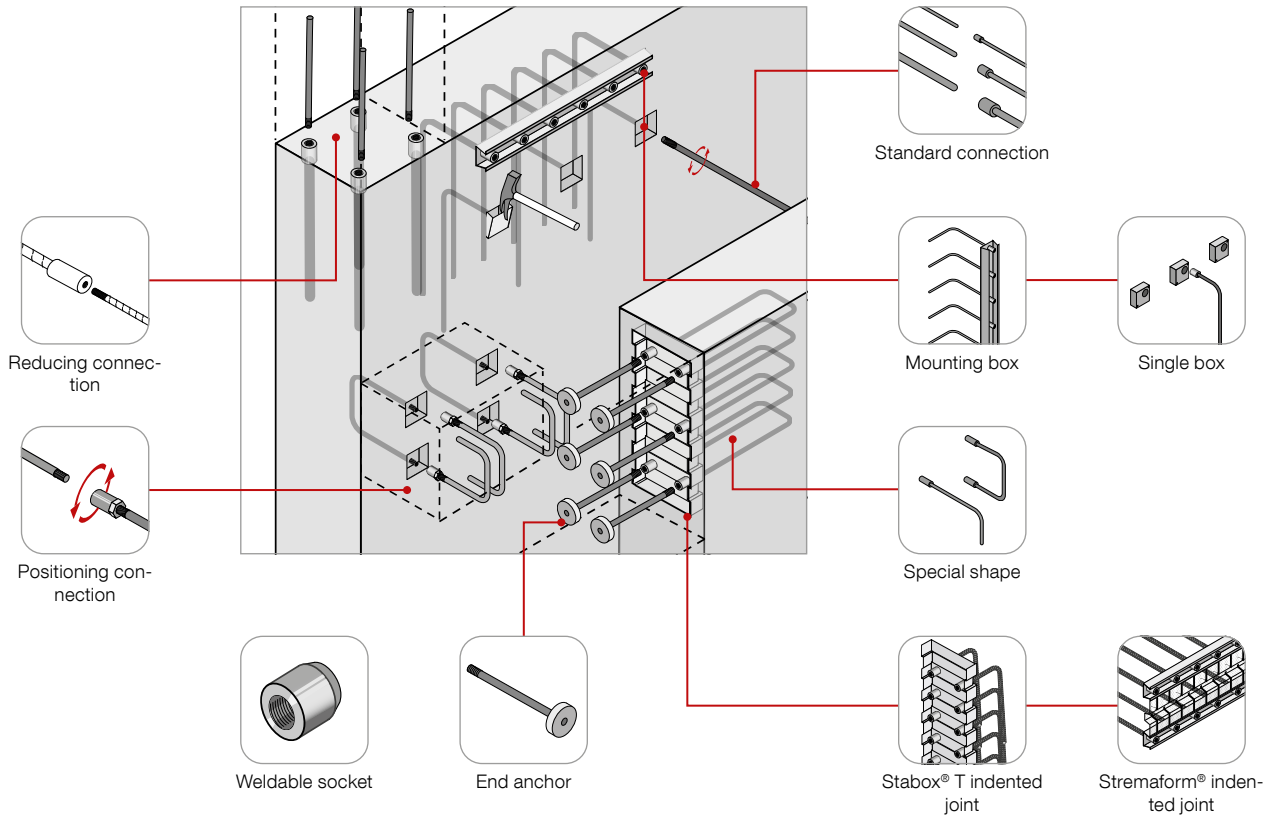


Stabox® continuity strip





MAX FRANK Coupler threaded connection





Shearail® punching shear reinforcement

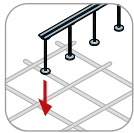
Layout



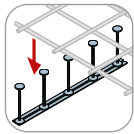
Radial layout pattern



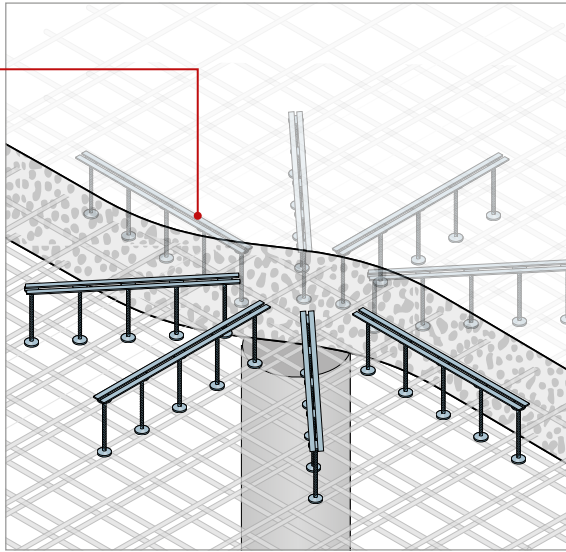
Orthogonal layout pattern



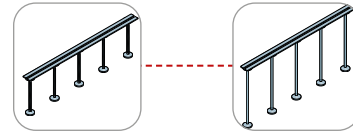
Top down fixing



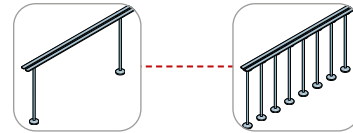
Bottom-up fixing



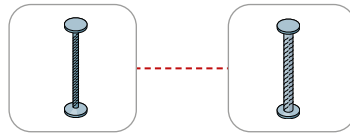
Stud heights variable



Number of studs per rail variable



Stud diameters



Ø 10, 12, 14, 16, 20, 25 mm

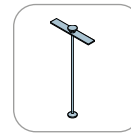
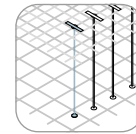


Plate solution



Headed bar

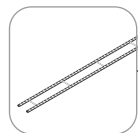


Brick-Track® masonry reinforcement

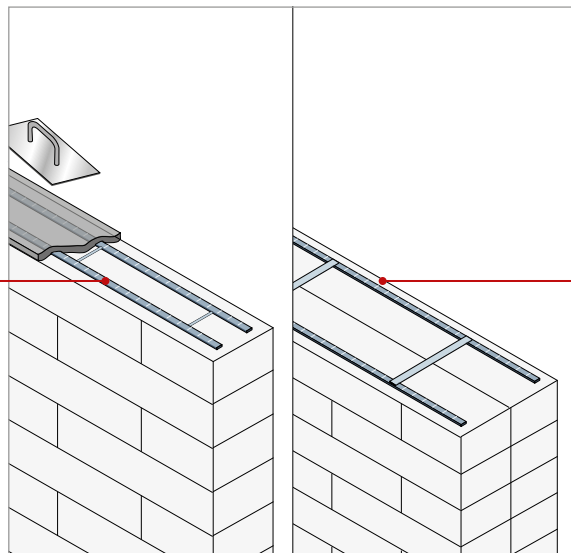
Brick-Track®



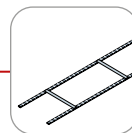
Stainless steel



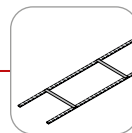
Galvanised steel



Brick-Track® CJ for Collar Jointed Masonry

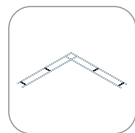


Stainless steel



Galvanised steel

Prefabricated components



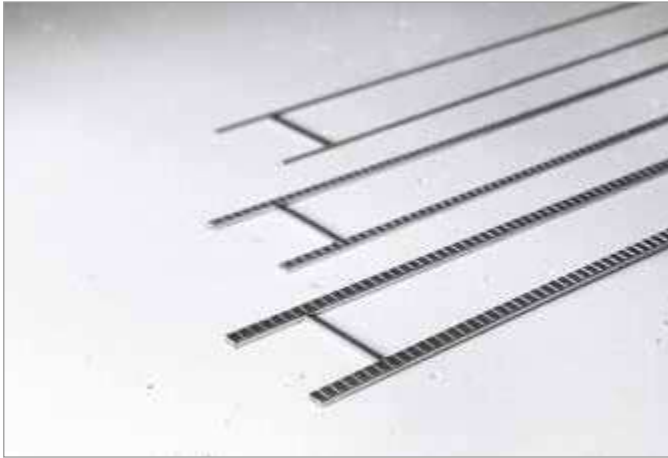
Corner



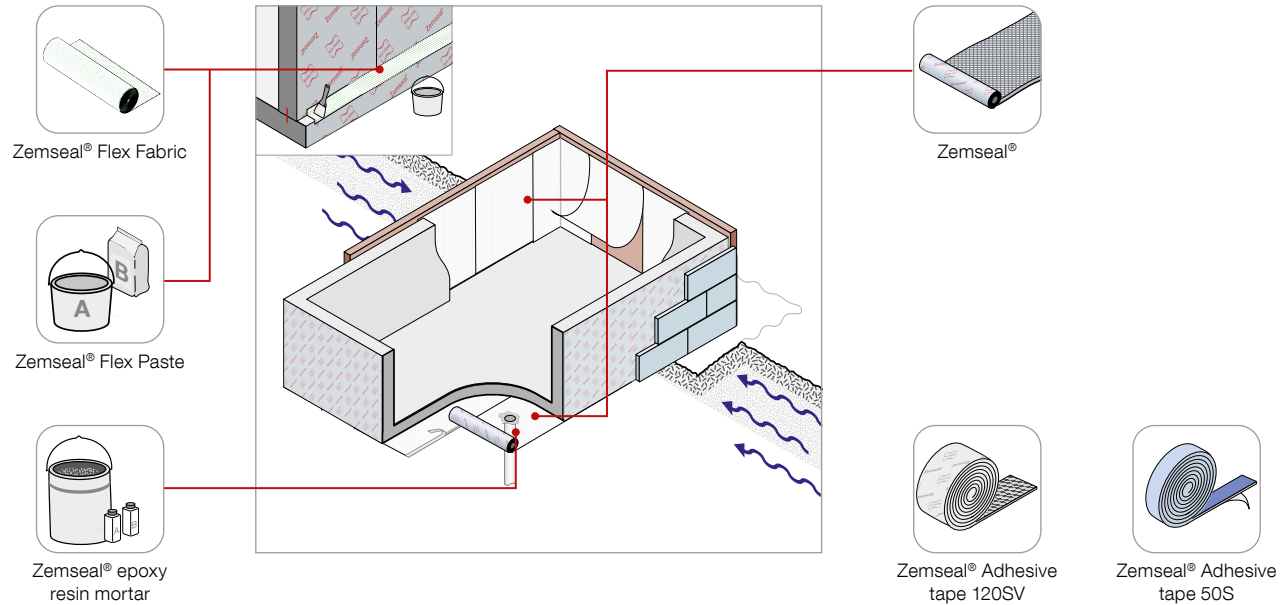
T

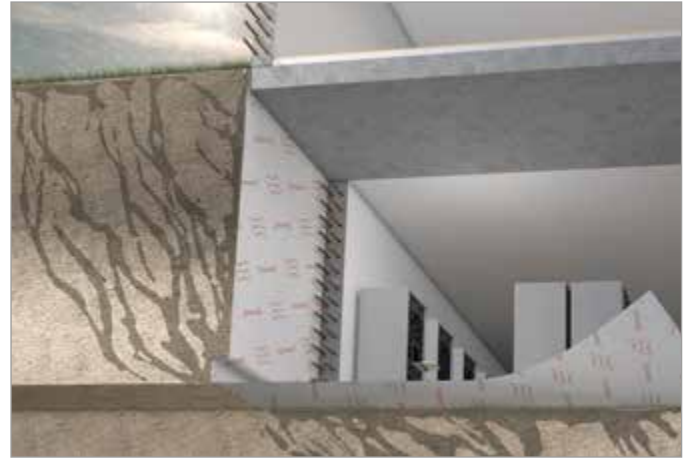


Curved

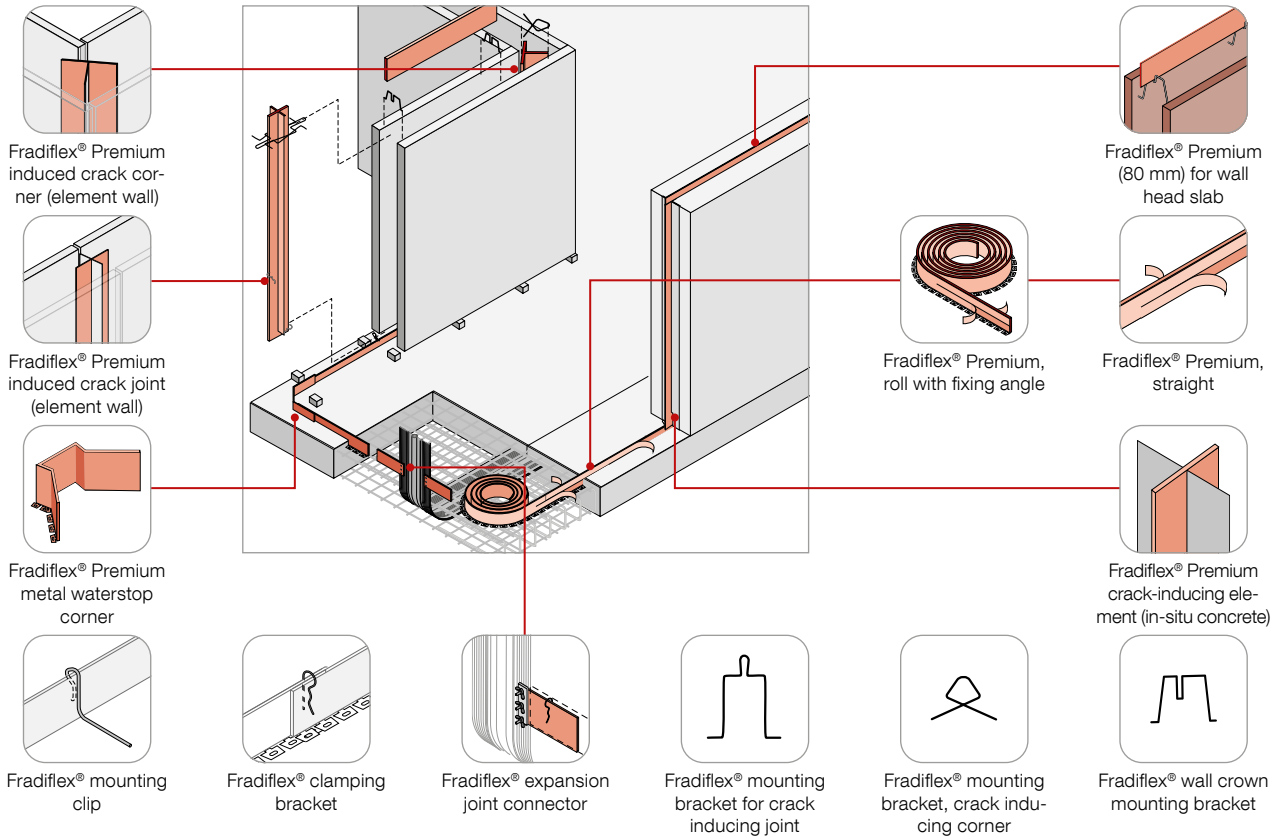


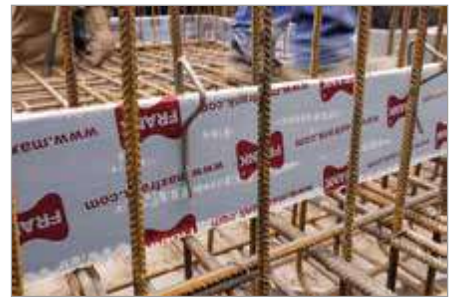
Zemseal® sub-structure waterproofing system



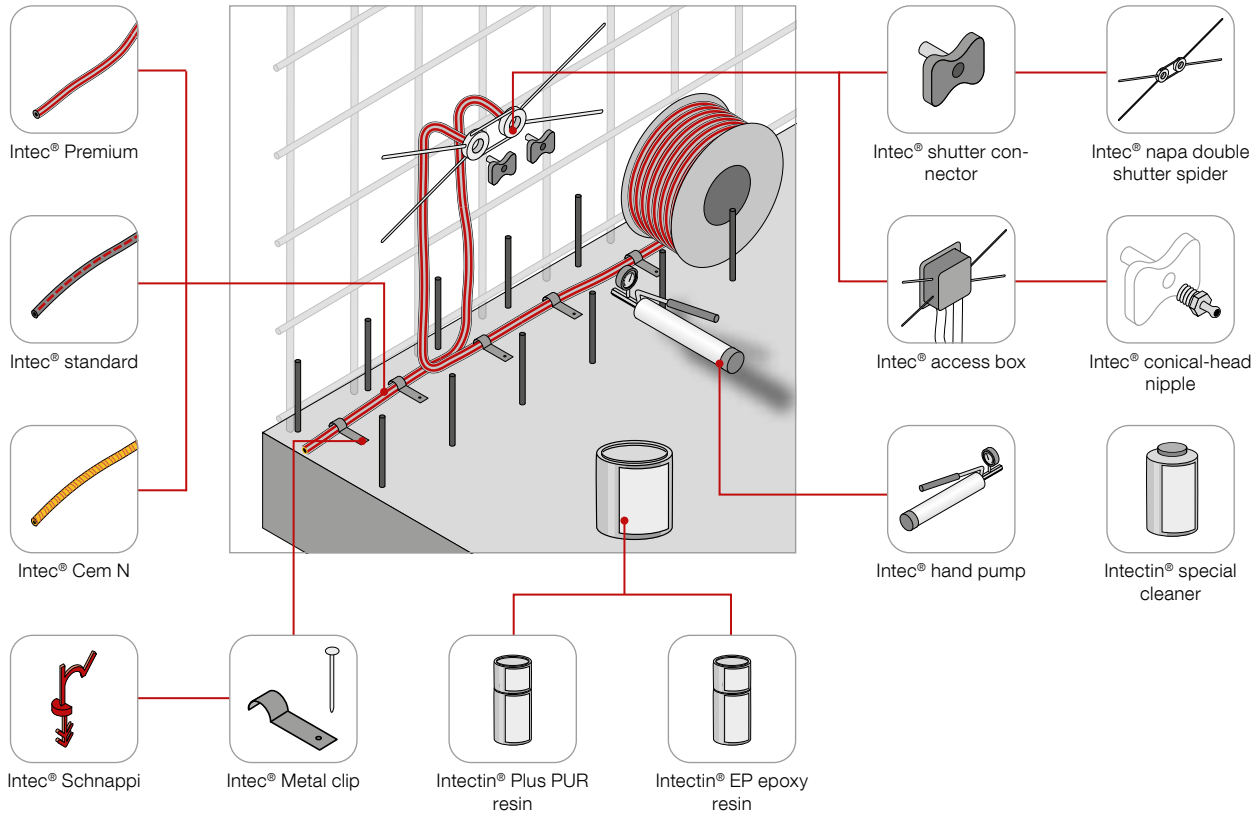


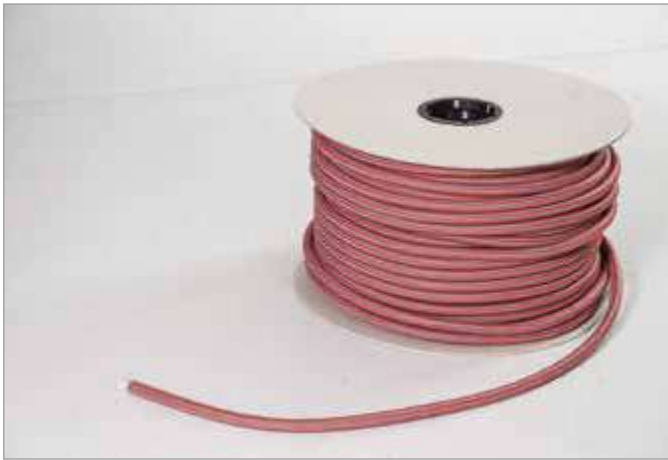
Fradiflex® metal waterstop



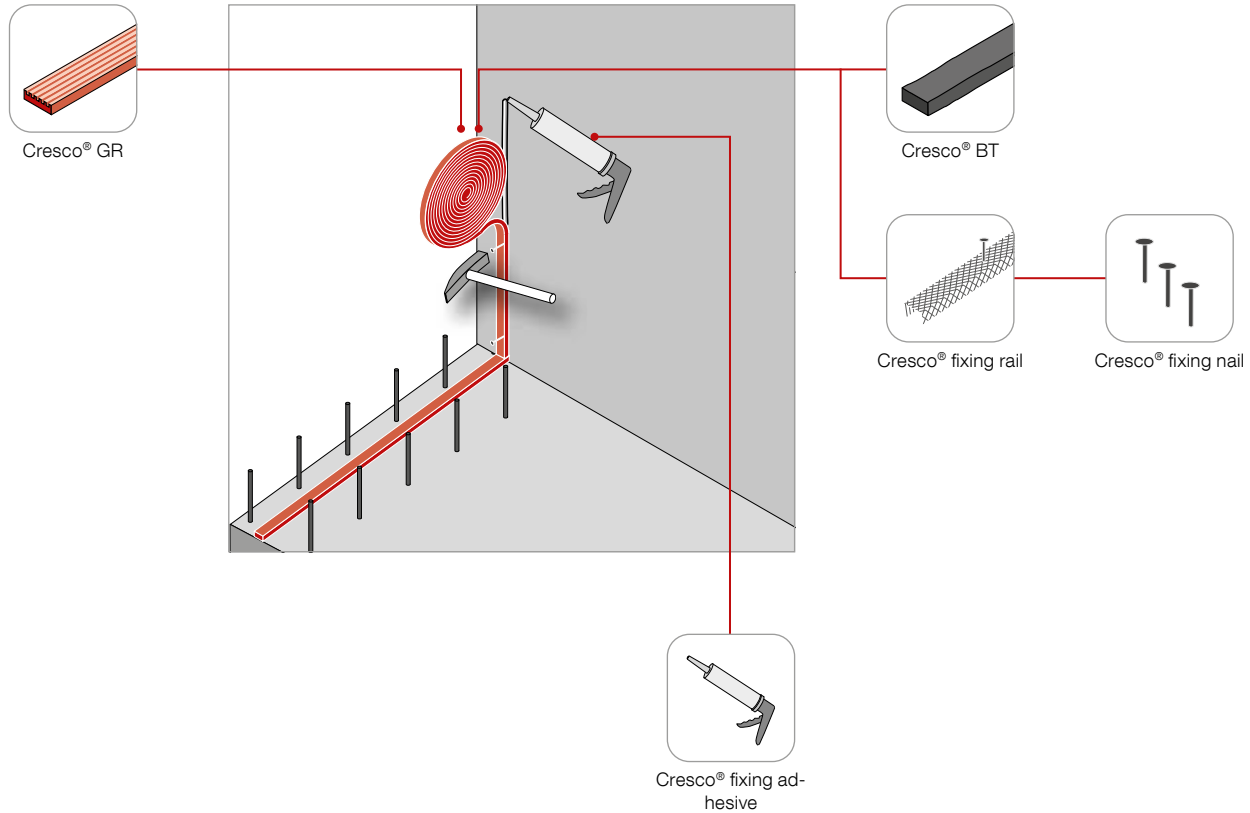


Intec® injection hose system



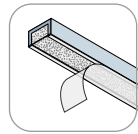


Cresco® expanding waterstop

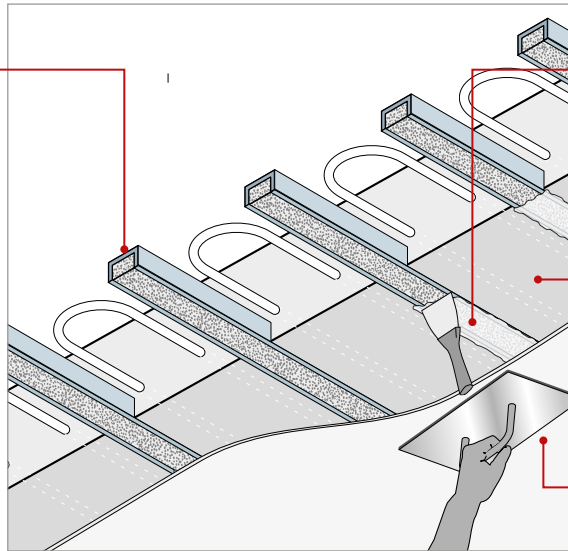




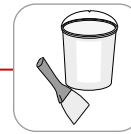
Sorp 10® room-acoustic sound absorber



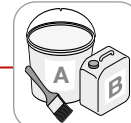
Sorp 10®



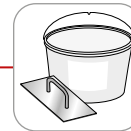
Acoustically open coating



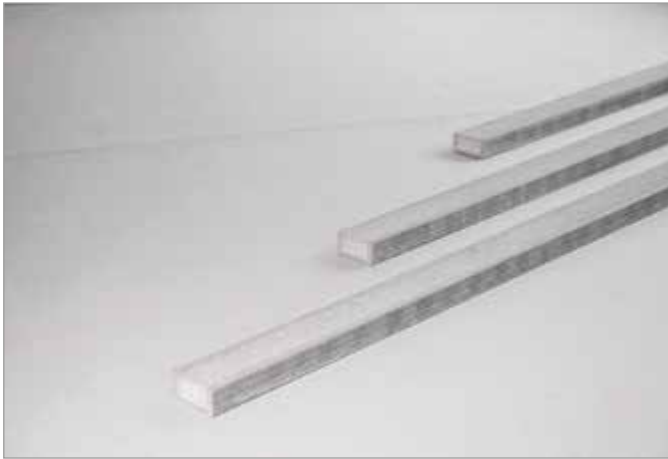
Sorp filler grout



Sorp primer

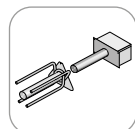


Sorp acoustic plaster

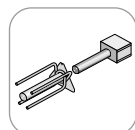


Egcopal impact sound insulated shear force dowel

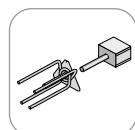
Precast element



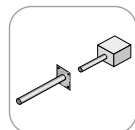
Egcopal SPX F



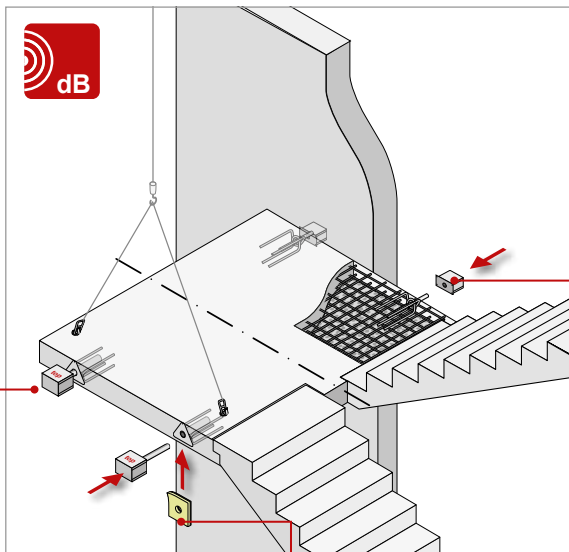
Egcopal SPH F



Egcopal SP F

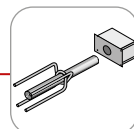


Egcopal SP light F

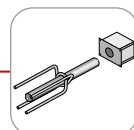


Fire protection cuff

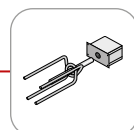
In-situ concrete



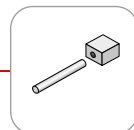
Egcopal SPX O



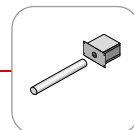
Egcopal SPH O



Egcopal SP O



Egcopal SP light O

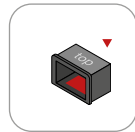


Egcopal SP light OB



Egcosono stair landing bearing

Precast element



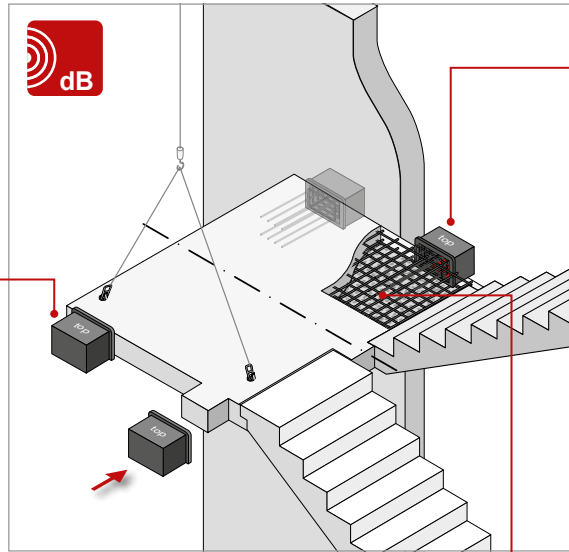
Egcosono SP F



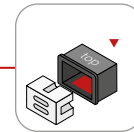
Egcosono SPV F



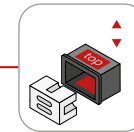
Egcosono SPH F



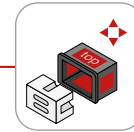
In-situ concrete



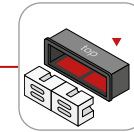
Egcosono SP O



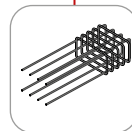
Egcosono SPV O



Egcosono SPH O



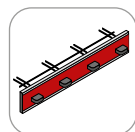
Egcosono SPL O



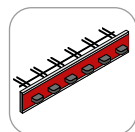
Egcosono reinforcement cage



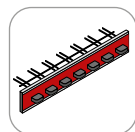
Egcostep® stair flight decoupling



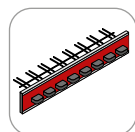
Egcostep® SP S4



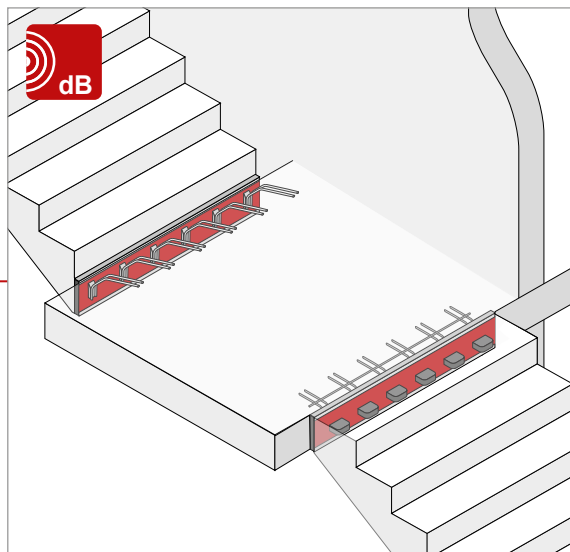
Egcostep® SP S6



Egcostep® SP S7

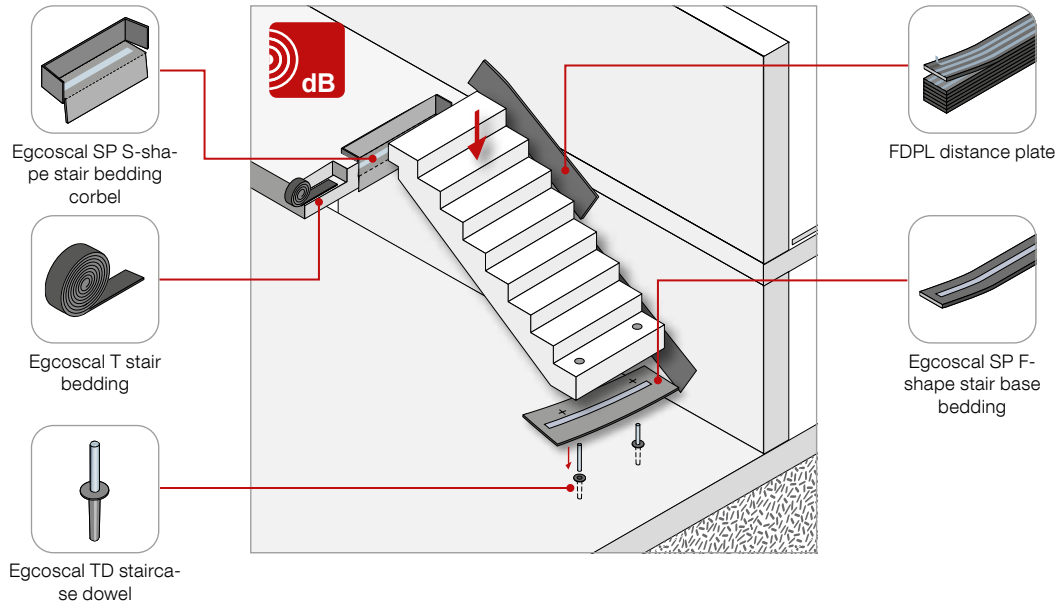


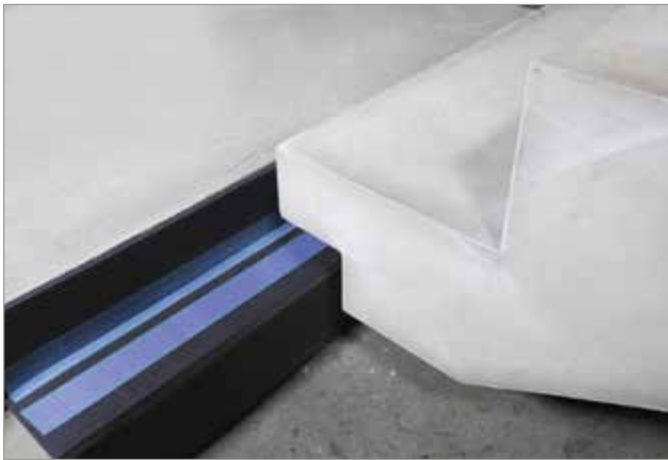
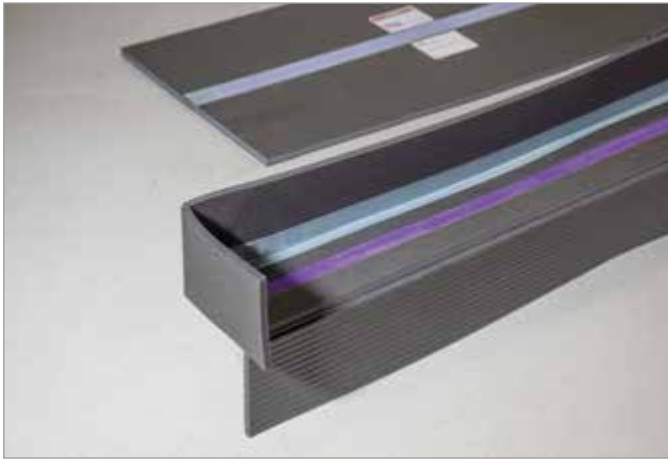
Egcostep® SP S8



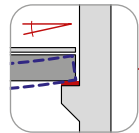


Egcoscal stair beddings

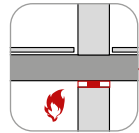




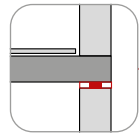
Egcodist wall and floor bearings



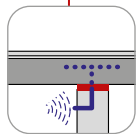
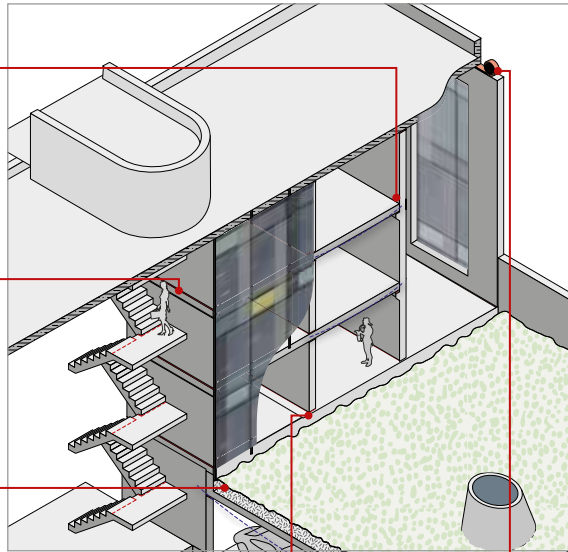
Enables torsions



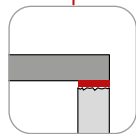
Fire protection



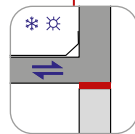
Load centring



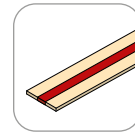
Reduction of secondary sound paths



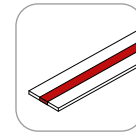
Compensation of unevenness



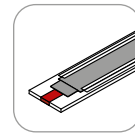
Enabling length changes



Egcodist centring bearing R90

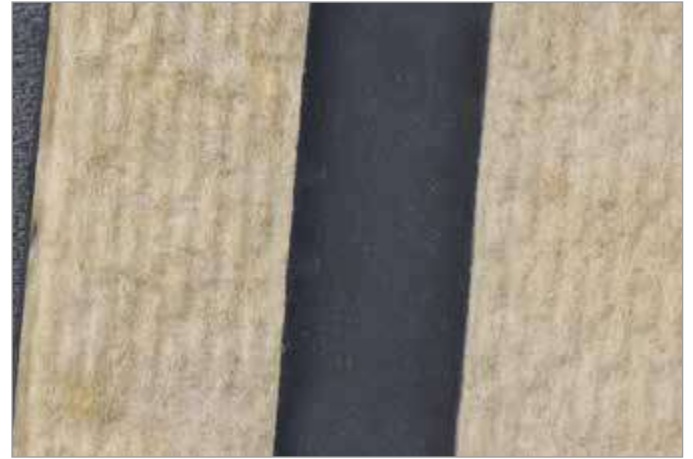
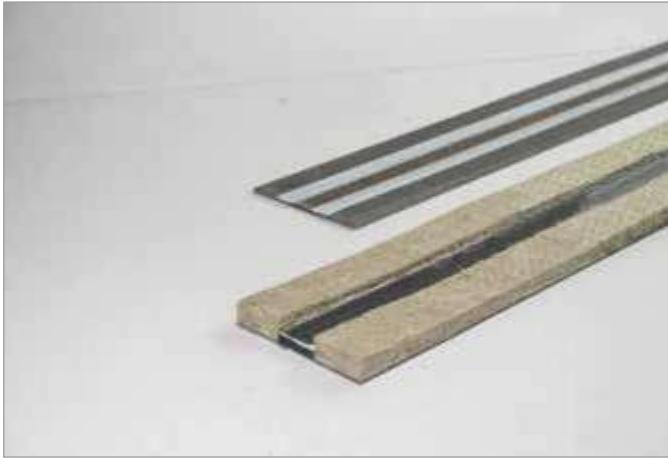


Egcodist centring bearing

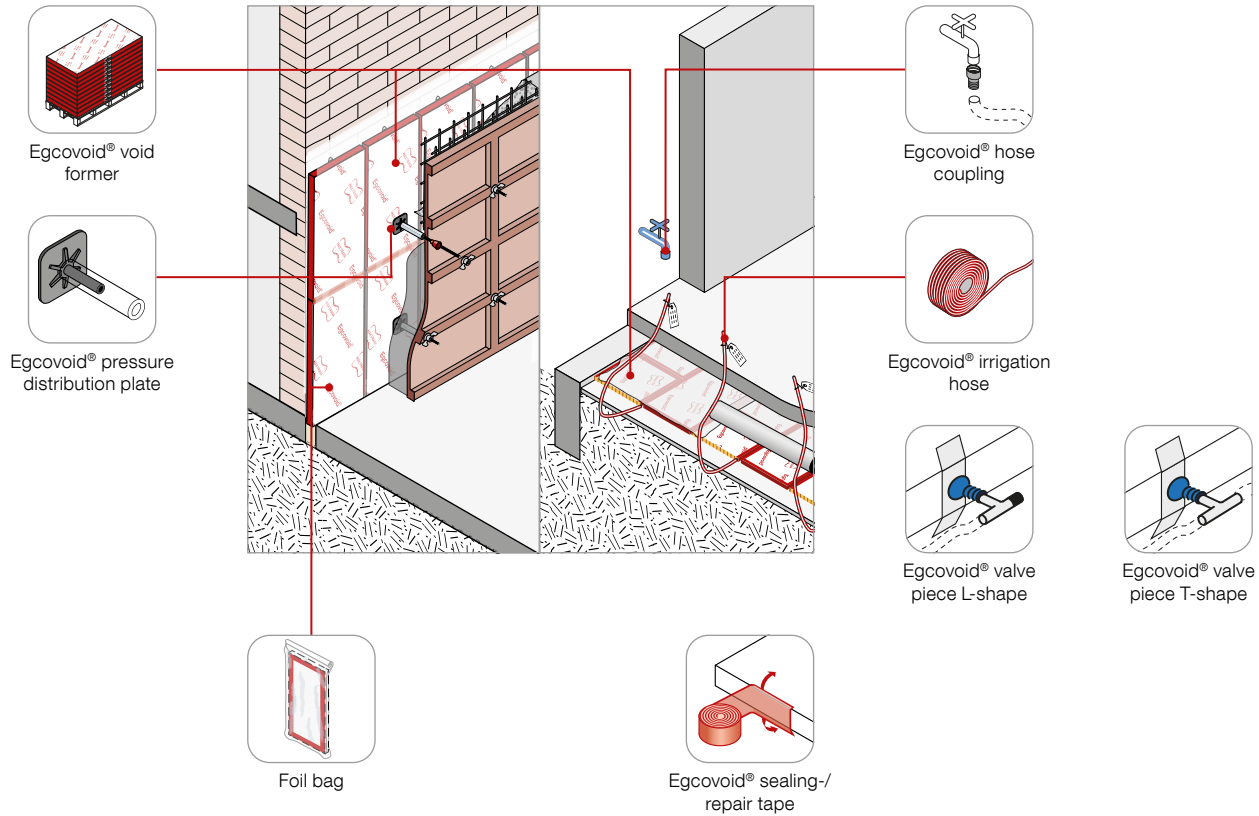


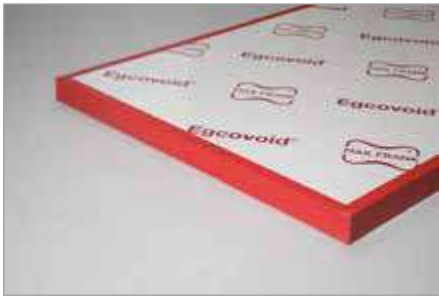
Egcodist slide bearing





Egcovoid® void former







MAX FRANK Group

Headquarters:
Max Frank GmbH & Co. KG
Mitterweg 1
94339 Leiblfling
Germany

www.maxfrank.com

